



The National Center on Homelessness Among Veterans

Promoting data-driven, evidence-based solutions to end Veteran homelessness

Migration by Veterans Who Receive VA Homeless Services

Stephen Metraux, PhD

(w/ Thomas O'Toole & Dan Treglia)

National Center for Homelessness Among Veterans

stephen.metraux@va.gov

Annual Meeting of the
Nat'l Coalition for Homeless
Veterans

June 2, 2016





The National Center on Homelessness Among Veterans

Promoting data-driven, evidence-based solutions to end Veteran homelessness

Veterans, Homelessness & Migration



Source: www.arttoday.com



Research Questions

rans

- 1) “How Many?” To what extent do which homeless veterans migrate across the VA’s 21 VISNs?
- 2) “Where?” Are there VISNs or VAMC catchment areas that have a greater (or lesser) extent of migration by homeless veterans?





The National Center on Homelessness Among Veterans

Promoting data-driven, evidence-based solutions to end Veteran homelessness

Data

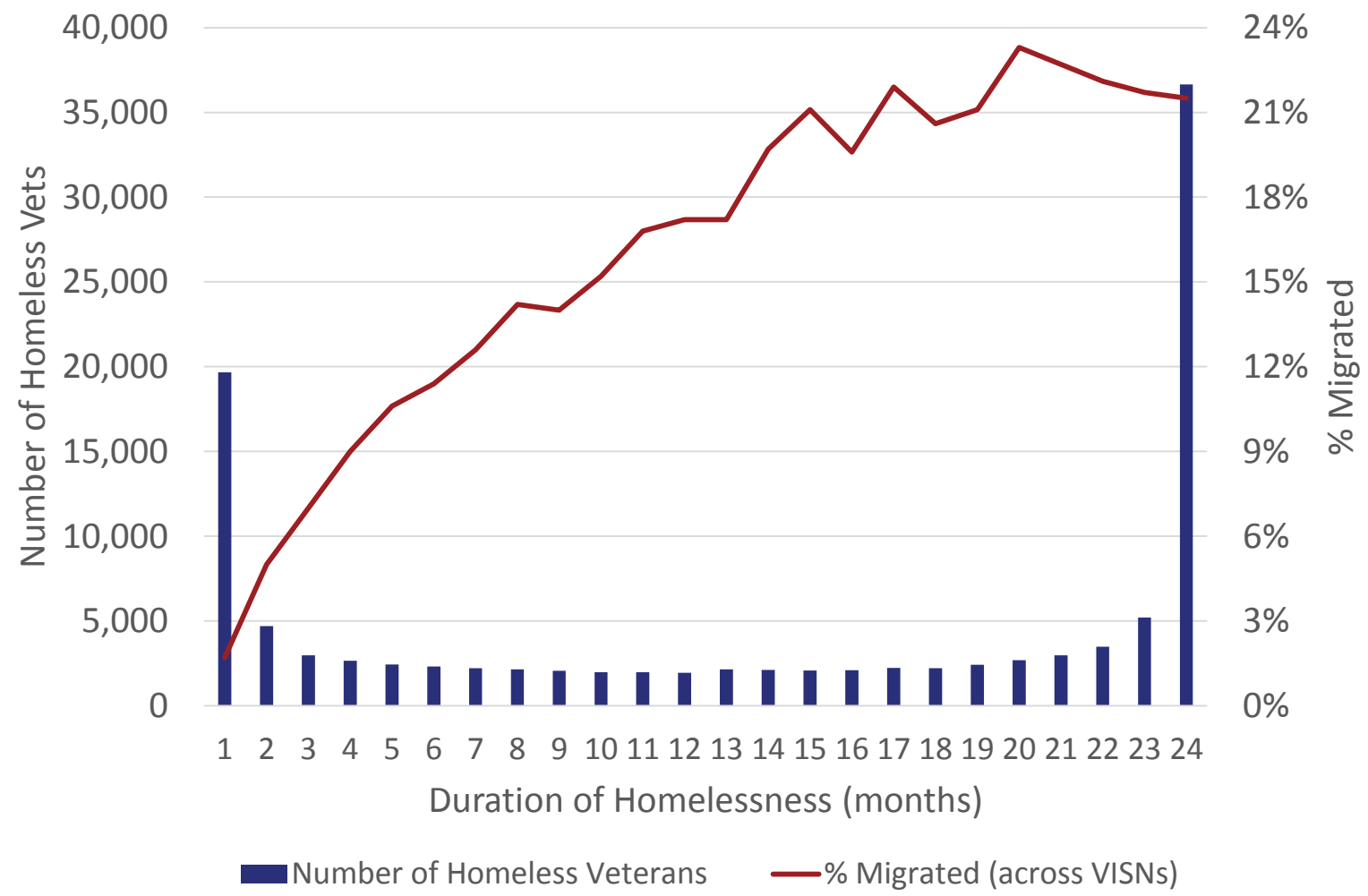
- HOMES records selected with initial entry date between 2010 and 2012
- Merged with CPRS records by SSN (service dates, location, and homeless indicator)
- Examined mobility in use of VHA services 2 years after initial homeless record (2011-14)
- Mobility is based on change of VHA service locations
- N of 113,400 Veterans



The National Center on Homelessness Among Veterans

Promoting data-driven, evidence-based solutions to end Veteran homelessness

Homeless Veterans - Duration of Homelessness and Extent of Migration (across VISNs)

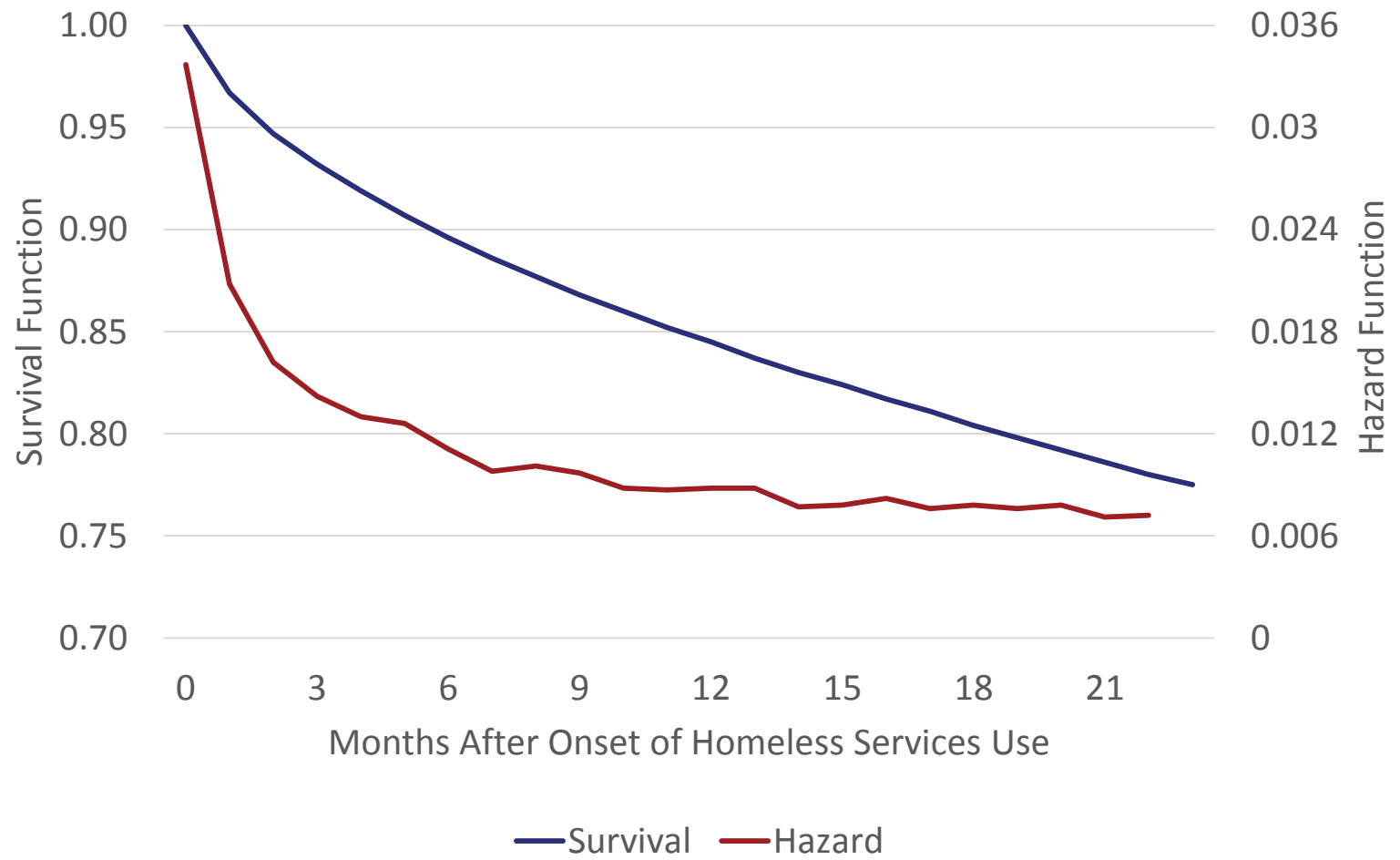




The National Center on Homelessness Among Veterans

Promoting data-driven, evidence-based solutions to end Veteran homelessness

Survival and Hazard Functions for Migration Across VISNs by Homeless Veterans





The National Center on Homelessness Among Veterans

Promoting data-driven, evidence-based solutions to end Veteran homelessness

Homeless Veterans and Migration Measures: Selected VISNs

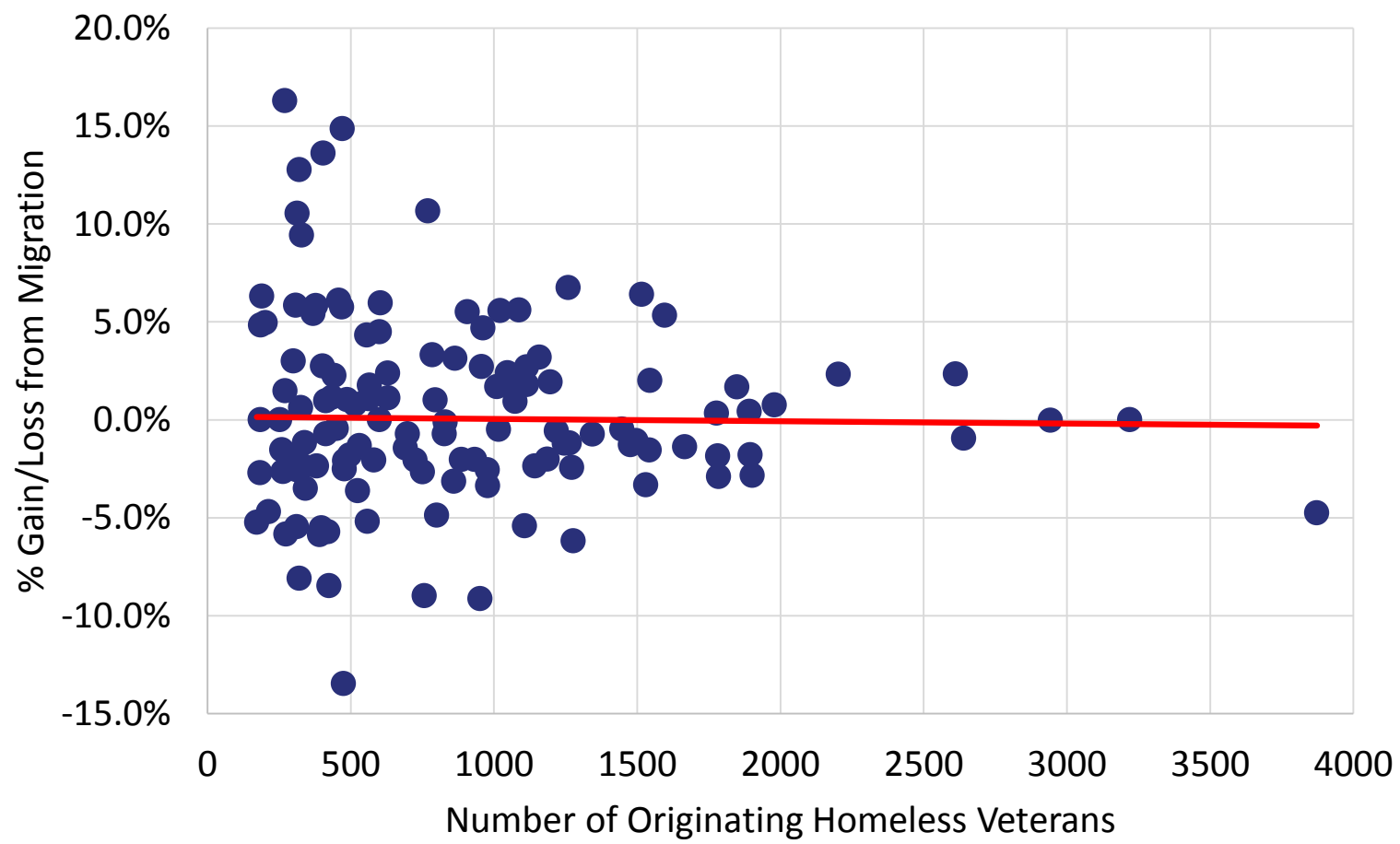
VISN	Geography (approximate)	Homeless Veterans at Origin	% Out-migration	% In-migration	loss/gain	% loss/gain
1	New England	4,931	12.2%	11.1%	-58	-1.2%
2	Upstate New York	3,220	16.2%	16.2%	0	0.0%
3	Metro New York City	3,453	19.6%	18.2%	-48	-1.4%
4	PA, DE, northern WV	4,892	16.9%	14.9%	-100	-2.0%
5	Metro Washington DC	2,480	20.0%	25.3%	130	5.2%
8	FL, south GA, PR, Caribbean	9,179	13.0%	14.9%	181	2.0%
9	Mid-South (KY & TN)	4,679	17.0%	18.7%	79	1.7%
10	Ohio	4,252	11.8%	15.5%	160	3.8%
11	MI, IN, IL	6,034	14.3%	12.0%	-139	-2.3%
12	Metro Chicago & east WI	5,172	13.3%	12.7%	-30	-0.6%
16	OK, AR, MS, LA, east TX	6,275	18.8%	19.4%	41	0.7%
17	Central TX	7,497	13.1%	13.6%	35	0.5%
19	MT, WY, UT, CO & ne NV	3,971	19.2%	16.6%	-103	-2.6%
20	WA, OR, ID, AK	6,241	12.9%	13.4%	34	0.5%
22	South CA & south NV	9,370	14.3%	13.2%	-107	-1.1%
	Total	113,400	15.3%	15.3%	0	0



The National Center on Homelessness Among Veterans

Promoting data-driven, evidence-based solutions to end Veteran homelessness

Scatterplot: Net Change due to Migration & Size of Homeless Population (VAMCs)

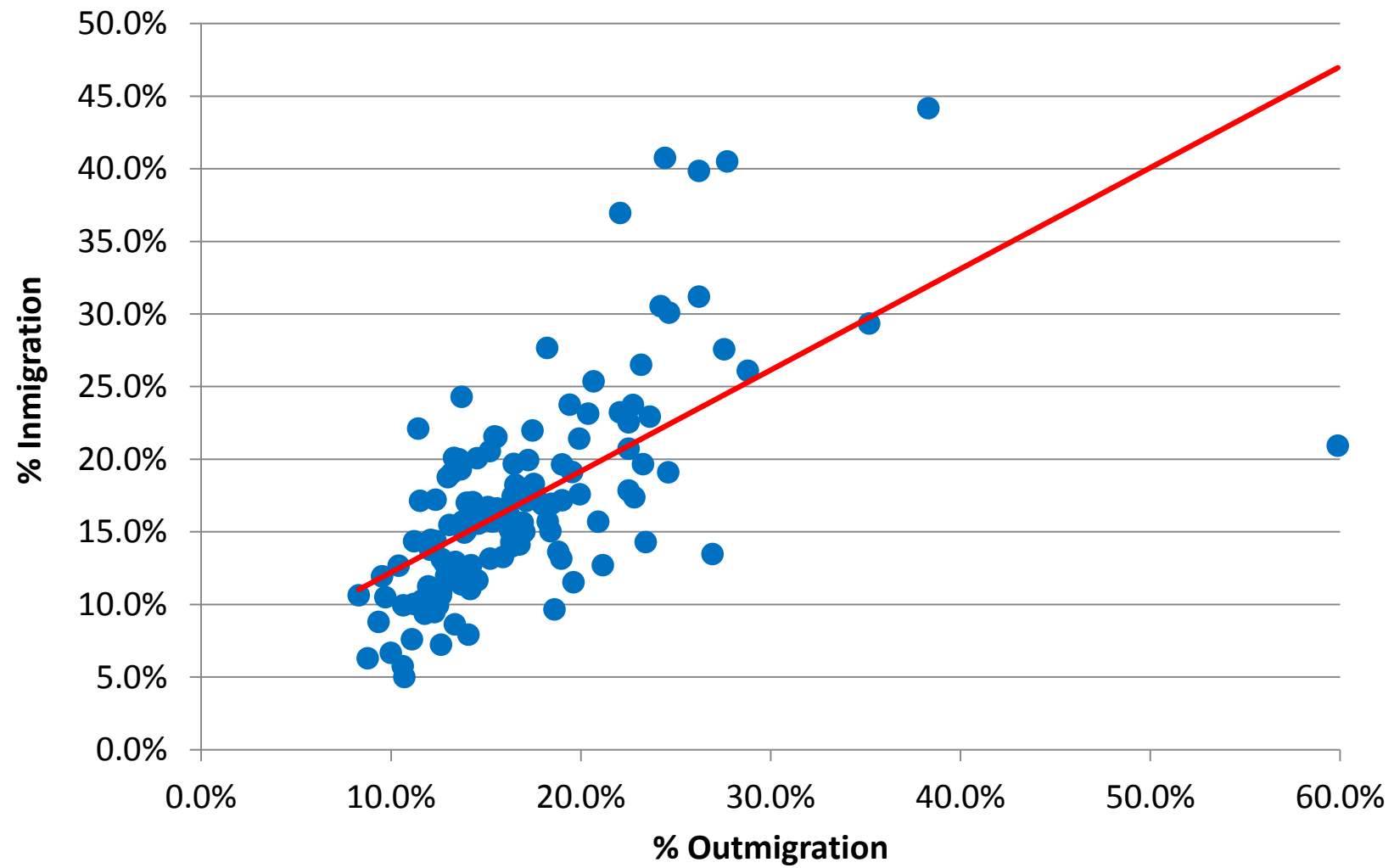




The National Center on Homelessness Among Veterans

Promoting data-driven, evidence-based solutions to end Veteran homelessness

Scatterplot of Net Change due to Migration & Homeless Population Size (VAMCs)





The National Center on Homelessness Among Veterans

Promoting data-driven, evidence-based solutions to end Veteran homelessness

Key Points

- **15.3 percent (of 113,400 veterans) migrated across VISNs while homeless.**
- **Those who were homeless longer had higher migration rates (over 20%).**
- **Migration was most likely to occur in the earlier months of homelessness.**
- **No clear migration patterns emerged:**
 - **For most VISNs the net impact of migration was small.**
 - **For VAMCs, as the number of homeless veterans increased the net impact of migration attenuated towards zero.**
- **Future research should examine factors that influence migration.**
 - **individual and area factors**
- **Limitations**